

The logo for 'Lapworth Lates' features the word 'Lapworth' in a black, sans-serif font, arched over a stylized illustration of a volcano. The volcano is depicted with a yellow and orange lava flow and a large, dark, billowing plume of smoke or ash. The word 'Lates' is written in a large, bold, black, sans-serif font, with the volcano's plume appearing to flow through the letter 'a'.

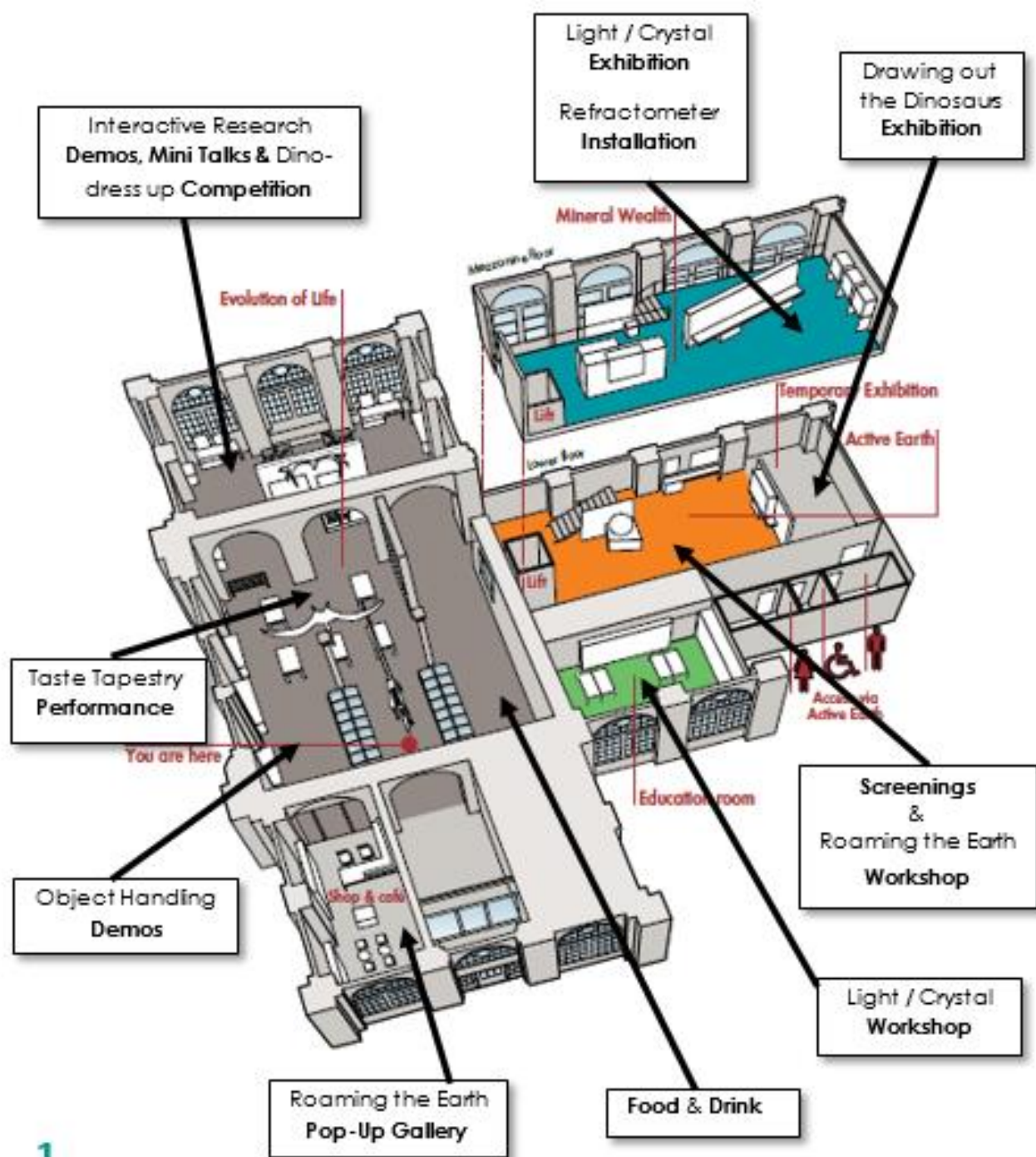
**Lapworth**  
**Lates**

**DINOSAURS**  
**IN POPULAR CULTURE**

*Thursday 19<sup>th</sup> July, 2018*

*#LapworthLates*

*@uobengage @cultureuob @lapworthmuseum*



# Welcome to Lapworth Lates!

We aim to adhere to the timings below, though they may be subject to some slight changes. Please direct any questions you may have to anyone in a Lapworth Lates T-shirt or keep up to date with proceedings on Twitter #LapworthLates

	7pm	7:30	8pm	8:30	9pm	9:30
<b>Evolution of Life</b>	Welcome	Lapworth Curiosities	Roaming Creatures	Taste Tapestry	Lapworth Curiosities	Competition winners announced
<b>Education Room</b>	Light / Crystal (drop-in workshop)					
<b>Mineral Wealth Gallery</b>	Light / Crystal (exhibition)		Light / Crystal (exhibition)			
	Roaming Creatures					
<b>Active Earth Gallery</b>	Roaming the Earth D.I.N.O Film ROAR-igami Drawing Out the Dinosaurs				Roaming the Earth D.I.N.O Film ROAR-igami Drawing Out the Dinosaurs	
<b>Behind the Arches</b>	Dress Code: Dinosaur! Interactive demos and mini talks				Dress Code: Dinosaur! Interactive demos and mini talks	
<b>Shop and Cafe</b>	One night only! Roaming the Earth Pop-Up Gallery					

Final talks, workshops and demos will begin at 9:30pm

# H I G H L I G H T S

## DRAWING OUT THE DINOSAURS

*[Exhibition: Dr Will Tattersdill & Prof Richard Butler]*



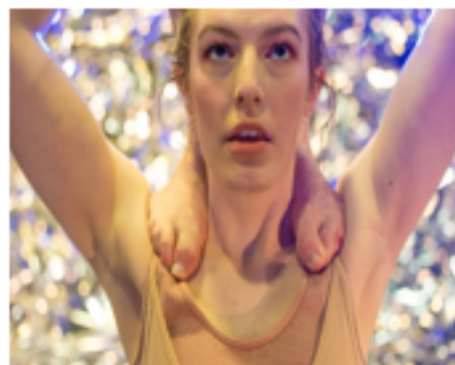
No-one has ever seen a living dinosaur, but we all know what one looks like. This is because of two centuries of labour from scientists, artists, writers, publishers and filmmakers who have (with varying degrees of accuracy) worked together to turn evidence of death into images of life. This exhibition captures some of the history of the drawn dinosaur, combining outdated palaeoart with some of the very latest reconstructions of Mesozoic animals.

Where? Temporary Exhibition

## TASTE TAPESTRY

*[Performance: LYNNEBEC]*

Presented by theatre company, LYNNEBEC, 'Taste Tapestry' is a multi-sensory experience that combines food with beautifully choreographed movement. Taste Tapestry is a durational piece that explores both superfood trends in modern society and the diet of herbivore dinosaurs. All cast and crew are Alumni or students of the University of Birmingham. / Photo credit: Emma Jones

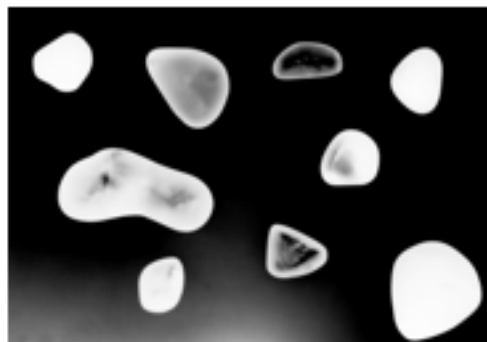


Co-Directors: Jessica Barber and Catherine Butler, Producers: Natalia Catechis and Emily Horn, Stage Management: Elliot Mitchell, Performers: Jessica Barber, Catherine Butler, Eleanor Rattenbury, Laurs Oakley, and Marcus Paragpuri

Where? Main Gallery (plus look out for 'Roaming Creatures'!)

## LIGHT / CRYSTAL

*[Exhibition: Jo Gane]*



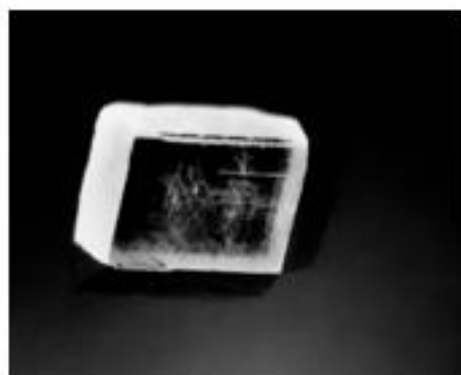
Photographic artist and educator Jo Gane is working with the Lapworth crystal collection to create an installation which investigates the ways in which the sparkling surfaces of crystals reflect and refract light. This new exhibition combines three dimensional artwork (*Refractometer*) with a series of photogram prints and photogravure etchings. / Photo credit: Jo Gane

**3** Where? Mineral Wealth gallery

## WORKSHOPS

### LIGHT / CRYSTAL Photogram [Jo Gane]

Join artist Jo Gane in her portable darkrooms for a drop-in workshop to explore analogue photographic processes. Have a go at creating your own mini photogram print to take home with you as a memento of the evening. Please ensure you use gloves for safety and take care with personal clothing. Note: this activity can only accommodate limited numbers and will run on a first come, first served basis. / Photo credit: Jo Gane



Where? Education room



### ROAMING THE EARTH: Dinosaur Still Life

Inspired by the 'Drawing out the Dinosaurs' exhibition, our Lates student team have created an imaginary landscape when dinosaurs roamed the earth. Conjuring up childhood enthusiasm for the mystery of beasts now long-gone, the team invite you to unleash your inner artist by taking part in a dinosaur still

life drawing workshop. Once complete your drawing will be displayed in our one-night-only pop-up exhibition in the Shop Gallery. Will your dinosaur be more a Picasso or a Pollock? Will you opt for anatomical accuracy or artistic style? Explore each other's imaginations and feel free to take your own drawing home with you. / Image credit: The Primitive World, Adolphe François Pannemaker (1857)

Where? Active Earth gallery

### ROAR-igami

Have a go at learning how to craft dinosaur-shaped origami with the help of folding aficionado, ROAR-y, and our Lapworth Lates team, who will be on hand to show you how to bring your own paper dinosaur to life.

/ Photo credit: Flickr origami\_madness (cc license)

Where? Active Earth gallery



## D . I . N . O FILM SCREENINGS

Our reel of dino-themed shorts will keep you entertained throughout the night. Grab a seat and relax! What's playing, you ask?



### \ \ DINOSAURS AND THINGS

(1981; 13 minutes, silent, stop-motion animation)

This whacky animated showreel illustrates the scope of filmmaker, Jon Coley's, stop-motion technique. Coley garnered much attention when in 1976, when he was just 17, BBC East produced a short documentary about him, titled "The Boy Who Makes

Monster Films". Coley continued a life-long fascination with monster films and he worked on these sequences under the supervision of the legendary fantasy animation filmmaker Ray Harryhausen. / Image credit: Still from Dinosaurs and Things

### \ \ DRAWING OUT THE DINOSAURS

(2018; 3 minutes, exhibition preview & curator interview)

Will Tattersdill from the University of Birmingham's Department of English Literature introduces the Drawing out the Dinosaurs exhibition (located in the nearby temporary exhibition space), which links his research on the social history of dinosaurs as portrayed in literature to dinosaur-related science from the nineteenth-century to present. His collaborator, palaeobiologist Professor Richard Butler, from the School of Geography, Earth and Environmental Sciences will also be in attendance to discuss the science behind the exhibition, so be sure to not miss his short talk around 8pm.



### \ \ DANCING WITH DINOSAURS

Earth Sciences PhD student Jack Richardson combines his love of geology, dance and film-making to bring you a short piece filmed in museum.

Where? Active Earth Gallery  
(all screenings)

Content will be looped throughout the night, though there will be no sound during the Taste Tapestry main performance

## DEMOS and MINI TALKS

All talks are designed to be friendly, informal and under 10 minutes, with an opportunity for you to ask questions if you have any. Gather round and have a listen!



### \\ **CANCER: As Old As The Dinosaurs**

(Demos and mini talk at approx. 7:30pm)

Although more prominent in public consciousness now than in times gone by, cancer isn't a modern disease. It was first described thousands of years ago and incredibly it's even been discovered in dinosaur bones! Hear about the research carried out at the Birmingham Cancer Research UK (CRUK) Cancer Centre into the history and evolution of tumours, cancer risk factors and how looking into the origins of individual cancer cells is helping our researchers to develop better treatments and outcomes for patients. Throughout the night you can also join CRUK's Regional Engagement Manager, Debbie Ringham and researcher, Jimmy Van Hear, to try out

out interactive demos and games. Find out how research into our immune systems is helping researchers to target hidden cancer weaknesses, how even tiny differences in our genes can have a big effect and why cancer research is so vital.

### \\ **DRAWING OUT THE DINOSAURS**

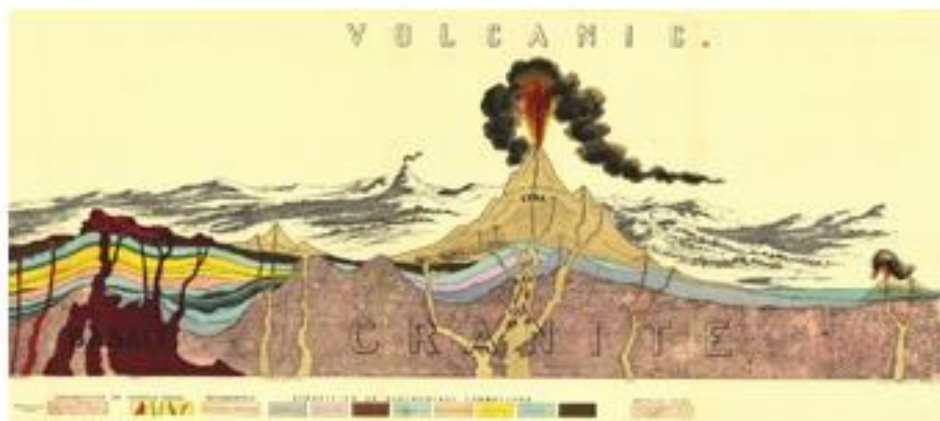
(Mini talk at approx. 8pm)

Professor Richard Butler, the Academic Keeper of the Lapworth Museum of Geology, will give a whistle-stop tour of his exciting research on the origins and rise of dinosaurs, and how it links with the current temporary exhibition looking at dinosaurs in popular culture over the last two centuries. This is the chance to ask your dinosaur-related questions!



Where? Evolution of Life gallery  
(just behind the arches and wall featuring the Charles Lapworth's portrait)

## DEMOS and MINI TALKS



### \\ MYTH-BUSTING: Volcano Pop-Culture

(Mini talk at approx. 9pm)

How accurate were films like 'Dante's Peak' (1997) or 'Volcano' (1997)? Does Hollywood ever get the science right? Join University of Birmingham research geologist Dr Carl Stevenson from the School of Geography, Earth and Environmental Sciences to find out...

### \\ DINOSAURS, VOLCANOES and MASS-EXTINCTION

(Mini talk at approx. 9:15pm)

University of Birmingham volcanologist, Dr Sebastian Watt, will answer some of the commonest misconceptions and questions around the science of volcanoes and the phenomenon of 'mass extinction', drawing on learning from his fascinating current research.

### \\ ENGINEERING THE PAST, FUTURE and PRESENT: Using 3D Technology (Demo)

Join Dr Naomi Green and PhD students,; Joe Crolla, Weiqi Li, Sanjeevan Kanagalingam and Thomas McKeown from the University of Birmingham's Department of Mechanical Engineering for a hands-on demo about the practical use of 3D printing technology. From examining and preserving dinosaur bones for the future to cutting edge research for surgical planning and patient specific biomedical implants. Play with some 3D tech and take away your very own dino! (while stocks last)



Where? Evolution of Life gallery (behind the arches)



## DEMOS and MINI TALKS



### \\ PREHISTORIC HERBARIUM

(Demo)

Come one and all to a bizarre palaeobotanical greenhouse! What mysteries will you uncover? Discover ancient wonders from a time before flowers and even trees, and marvel at exquisite preservation and living fossils! Join PhD students Daniel Cashmore (University of Birmingham) and Emily Roberts (University of Portsmouth) for a curious interdisciplinary collaboration.

Where? Evolution of Life gallery (behind the arches)

### \\ LAPWORTH CURIOSITIES

(Object handling demo)

Join Lapworth staff as they divulge curious tales behind the museum's collection and history, whilst they invite you to explore and handle some of the Museum's many treasured objects and artefacts.

Where? Main Gallery.

Look for our team wearing #LapworthLates t-shirts.



## FOOD and DRINK

Dino-themed snacks and drinks will be served throughout the night (while stocks last) please use your tokens for alcoholic drinks (2 tokens per registered attendee aged over 18).



**Allergies:** Please inform a team member of any allergies or dietary requirements.

**Alcohol:** If you look under 21, don't be offended if we ask for ID to check your legal age.

Where? Main Gallery, outside the Education Room.

Please use bins provided for any rubbish make us aware of any spills as quickly as possible.

Thank you in advance!

## COMPETITION TIME!!

### \ \ DRESS CODE DINOSAUR!

A playful excuse to get dressed in something silly, we invite you to explore and rummage through our dino-themed dress up box for all the accessories you could possibly need for that ultimate pre-historic selfie. Use the #LapworthLates hashtag when you tweet your selfie (or get a friend to take the picture for you) for a chance to win one of our Lapworth prize packs. 3 winners drawn at 9.30pm, one entry per Twitter account holder.

Where? Evolution of Life gallery.

### \ \ #LAPWORTHLATES: Photo of the Night

A prize pack will also be awarded to 'photo of the night' (as judged by our Lates volunteer team), so make sure to snap a photo of the thing that made your night and tell us why using #LapworthLates #MadeMyNight Winner announced at 9.30pm.

Where? Anywhere! (But take care around our delicate exhibits!)

## FEEDBACK



### LET'S DO THIS AGAIN!

Your feedback is absolutely vital to us; it helps us advocate for funding and resources to make future events happen, as well as to make improvements to be bigger and better than before. Throughout the night student volunteers will be handing our short feedback cards and asking for permission to do a quick vox-pop interviews. Please be honest and tell us what you liked or didn't. If you can spare us a minute or two of your time, we'd ROAR-ly appreciate it.

/ Image credit: Steveoc86

Thank you in advance!

## PHOTOGRAPHY and FILMING

Photography and filming will be taking place on the night. This may be used by the University of Birmingham and our collaborators for promotional purposes. Please let us know if you prefer not to be filmed.

## MEET THE TEAM



Special thanks to our Lapworth Lates student volunteer team for all their hard work and enthusiasm to help make tonight happen:

**Ting Yan**, PhD student in the Department of Electronic, Electrical and Systems Engineering

**Christopher Harrison**, PhD student in the School of Chemical Engineering

**Usman Abdurrahman**, PhD student in the Birmingham Centre for Railway Research and Education.

Thank you team!



**Thank you for attending the inaugural Lapworth Lates event!**

We hope you've discovered something new in our unique museum. If you enjoyed it, please let us know and help us to make sure that this event can become a regular feature!

Lapworth Lates has been created for you by the Lapworth Museum of Geology in collaboration with the University of Birmingham's Public Engagement with Research and Cultural Engagement teams and was kindly supported by the Alumni Impact Fund.

UNIVERSITY OF BIRMINGHAM | PUBLIC ENGAGEMENT



CULTURAL ENGAGEMENT